

CFPM100 Imaging Table



Integrated Headrest Table

Oakworks Imaging Tables have a large height range helping to create safe patient transfers while allowing doctors to stand comfortably. Our large lifting column is very rigid, ensuring rock solid support for fast imaging and procedures. Available with an integrated headrest or rectangle top.

Motion & Features

- Motion 1 - Height Range 22" - 40" - our lowest height range table
- Choice of integrated headrest or rectangular carbon fiber tops with 56" of metal free imaging
- 500 lb. patient weight capacity
- Warranty is 4 years parts and 3 years labor

SPECIFICATIONS

- Our lowest height range table 22"- 40"
- 500 lb Patient Weight Capacity
- Warranty: 4 years parts, 3 years labor

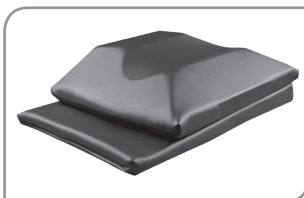
CFPM100 #81805 Integrated Headrest Top
 #81813 Rectangular Top

INCLUDED FEATURES	
Carbon Fiber Top 56" (133cm) Metal free imaging space	Integrated Headrest 22"x 84" (56cm x 214cm) Rectangular 24"x 80" (61cm x 203cm)
Motion 1	Electric 22" - 40" (56-102cm) Height Range w/o pad
Foot Control	Controls height range
Weight Capacity	500 lb (227kg)
Product Weight	343 lb (216kg)
Included Features	2" (5cm) Radiolucent Comfort Foam™ table top pad, 4" (10cm) locking casters, crescent face rest pad (included with integrated headrest top), patient restraint straps (2)
Warranty	4 years parts, 3 years labor
Safety Listings	FDA listed, CE marked, cETLus listed, CB Certificate

OPTIONS <i>must be ordered with table.</i>	
5" (13cm) casters	Upgrade from the standard 4" (10cm)
Non-USA electrical systems	Please inquire

ACCESSORIES <i>order any time.</i>		#
Arm Hammock	Use with Integrated Headrest Top	48751
Carbon Fiber Arm Board (6" wide)	180° Articulation	83575
Fluoro Extender	Polycarbonate	33975
Interventional Supine Pillow System	Contoured pad and support wedge pad	81821
Spine Positioning System II	8 piece system	81819
T-rail Clamp	6" (15cm) long rail	63336

INTERVENTIONAL SUPINE PILLOW SYSTEM



Primarily designed to facilitate cervical transforaminal injections, but useful for other antero-lateral procedures such as facet injections, medial branch blocks, stellate ganglion blocks, scalene injections, brachial plexus blocks and discography.



Rectangular Top Table

ACCESSORIES

SPINE POSITIONING SYSTEM II

Radiolucency & adjustability for ideal cervical, thoracic & lumbar visualization. Minimize unwanted movement & reduce procedure time.



ARM HAMMOCK

This unique product will comfortably & easily support your patient's arms when prone. Easily attached to the Integrated Head Rest table top.



SINGLE CARBON FIBER ARM BOARD

Fully radiolucent with a 180° range of motion, the arm board requires no mounting or attachment hardware and simply slides under the table top pad. It can be used on any fluoroscopy table & will support arms and feet in a variety of positioning configurations.



FLUORO EXTENDER

Made of radiolucent, polycarbonate material, it's organic shape is conducive to a variety of table placement applications. 30" long x 23.5" wide x 1/4" thick



6" ADJUSTABLE T-RAIL CLAMP

The adjustable T-rail clamp can be positioned along the grooved table top edge. Clamp is also removable.



5" CASTER (OPTIONAL)

Recommended for mobile service providers.



Contact Oakworks
 717.759.3146

www.oakworksmed.com
medsales@oakworks.com